



GT**R**
SIMULATOR

Design , Tested & Used by Professional Racers

TABLE OF CONTEXT



1. Table of Context
2. About
3. Retail & Wholesale
4. GTA™ Compact V2
5. GTA™ Compact V2 Stake F1® Team KICK Sauber Edition
6. GTA™ APEX
7. Stake F1® Team KICK Sauber APEX Edition
8. FS-18C Offical Air Force licensed Flight Sim
9. FS-16C Offical Air Force licensed Foldable Flight Sim
10. GTM Motion Compact 2-DOF Base
11. AATD (Advanced Aviation Training Device Flight Simulator)
12. GTA™ Revolution Racing Simulator
13. GTA™ Pro Model
14. GTA™ Model

15. GTS-F Model
16. RS30 Ultra Wheel
17. V3-Pro Pedals
18. RH3 USB Handbrake
19. RSH3 7+1 Gated Shifter
20. GTR Pro Gaming Table
21. APEX Gaming Chair
22. GTR Gaming Chair
23. Pista Racing Seat
24. Speciale Racing Seat
25. Accessories
26. Social Media

ABOUT



Experience The Same Thrill That Real-Life Race Drivers Feel

Since 2010, We have been offering professional-grade GTR Simulator at an affordable cost available to North America, and overseas. Looking forward, we seek to continuously bring further innovation gaming peripherals compatible with the GTR framework to the market. We would like to welcome you to the GTR family and hope to see you on the live track, virtual and metaverse in the future!

GTR Racing Simulator has engineered a fresh new look in the racing simulator cockpit market. GTR Racing Simulator is not just another video game chair, there are nine different models, each model will give the driver a complete different driving/flying experience.



*"GTR Racing simulator. We do
for the best, not for the rest"*

RETAIL & WHOLESALE



Wholesale Information

Thank you for considering GTR Simulator's Wholesale Program. Our goal is to be your comprehensive source for the latest racing simulators. We stand apart not only through our state-of-the-art products but also through our commitment to customer service and technical support as factory-direct authorized warehouse distributors for most high-demand product lines.

GTR Simulator is swiftly gaining popularity and missing it in your game shop means missing potential customers who visit our website searching for our products. Adding GTR Simulators to your product line-up could significantly enhance your sales. Moreover, these simulators also provide an excellent opportunity to upsell related products such as wheels, pedals, games, and consoles.

In order to get your account established, we request the following information:

1. A copy of your Business License
2. A copy of you Sales Tax Permit (Certificate of Resale)
3. A business card
4. A copy of your advertisement or a copy of your telephone directory listing.(please note that we will not process any application until all four documents are received.)

Sold at the following retailers:



GTA COMPACT V2



Space-Saving Performance Unleashed

Introducing the GTR Simulator GTA Compact V2 Foldable Racing Simulator, a breakthrough in simulation technology with its patented design. Ideal for enthusiasts of both open-wheel and closed-wheel racing, this foldable simulator offers customizable cockpit adjustments and a quick-release system for easy storage. Experience unmatched comfort and adaptability with adjustable backrest support and a specially designed sling seat that blends strength with breathability.

Length: 60 inches

Steering height: 22.5

Total heights: 34 inches

Width: 19 inches

Pedal Plate Angle: Adjustable

Gross Weight: 20 kg

Frame Material: Alloy

Seat Material: Canvas

Table Material: Alloy

Patented Versatile Simulation

Simulate a variety of racing styles, including open-wheel and closed-wheel vehicles, adapting to your preferred racing genre.



Portable but Complete in Every Detail.

GTA COMPACT V2

Stake F1® Team KICK Sauber Edition

Stake
F1® TEAM

KICK
SAUBER



Space-Saving

Performance Unleashed

Introducing the Special Edition GTR Simulator GTA Compact V2 Stake F1® Team KICK Sauber Foldable Racing Simulator – an Official Licensed Product of Sauber Motorsport AG. This groundbreaking simulator features a patented design, perfect for both open-wheel and closed-wheel racing enthusiasts. Enjoy customizable cockpit adjustments and a quick-release system for effortless storage. Experience unparalleled comfort and adaptability with an adjustable backrest and a specially designed sling seat that combines strength and breathability.

Length: 60 inches

Steering height: 22.5

Total heights: 34 inches

Width: 19 inches

Pedal Plate Angle: Adjustable

Gross Weight: 20 kg

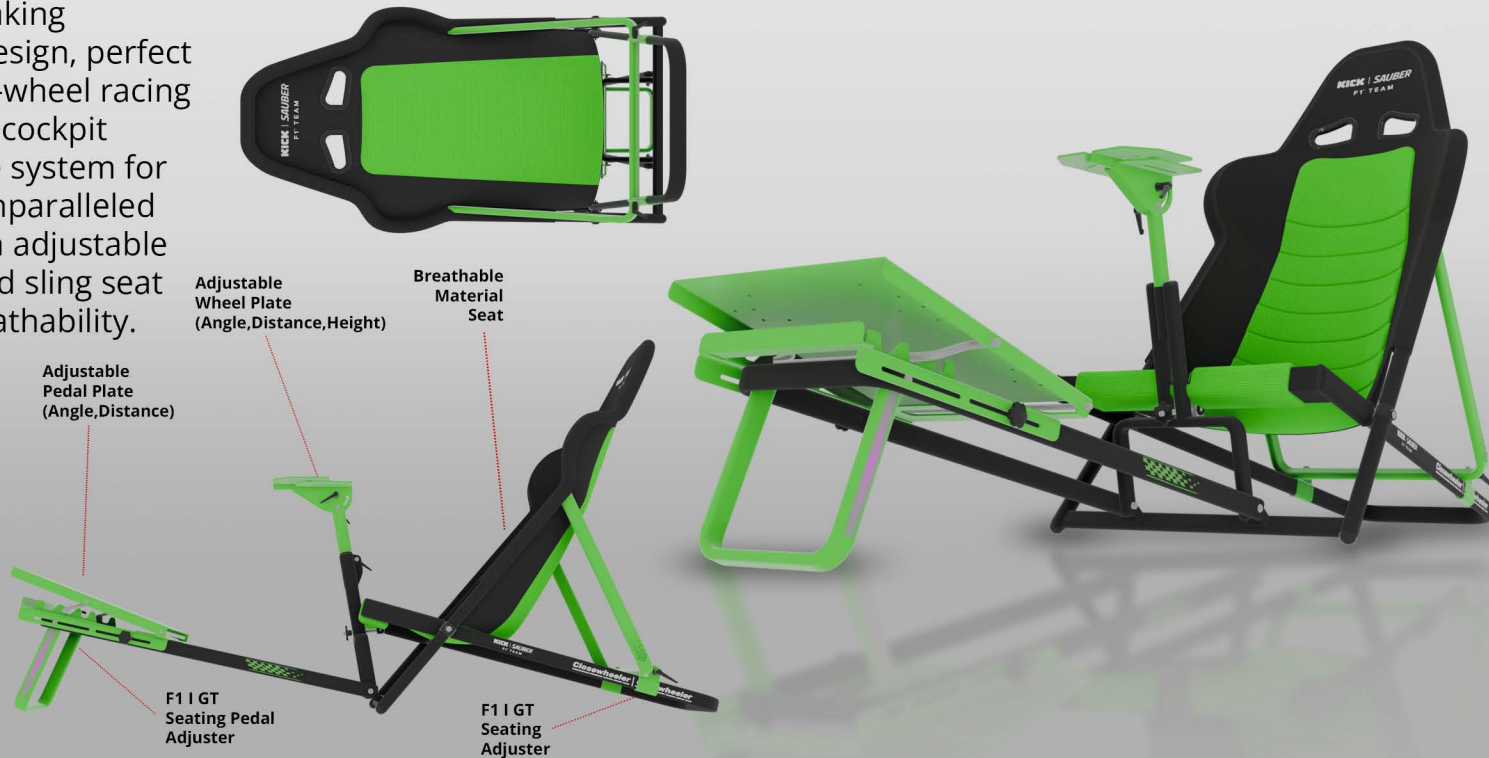
Frame Material: Alloy

Seat Material: Canvas

Table Material: Alloy

Patented Versatile Simulation

Simulate a variety of racing styles, including open-wheel and closed-wheel vehicles, adapting to your preferred racing genre.



Portable but Complete in Every Detail.

GTA™ APEX



Sleek and one of a kind design

Introducing GTR Apex Formula Racing Simulator, crafted by GTR Simulator with input from pro drivers, switches effortlessly between Formula and GT seating. Its sturdy frame ensures stability, while customizable adjustments for seat, pedals, and wheel optimize your setup. Compatible with PC and consoles, it offers immersive realism with premium materials, force feedback, and optional motion. Easy to assemble, it's perfect for pros and novices seeking top-tier performance and durability.

The Seat

Switch between GT and Formula seating with a tilt-adjustable design and a multi-functional headrest that doubles as a backrest or lumbar support. Comfort and versatility in one seat.

Seat Base Bracket

Fully adjustable for seat height, angle, and distance with a precision slider—customize your driving position for max control and comfort.

Wheel Mount

Easily fine-tune wheel height, distance, and angle for a perfect fit. Designed for quick adjustments and confident control.

Pedal Plate

Quickly switch between GT and Formula angles with an adjustable, pre-drilled pedal plate. Built for fast tweaks and total precision.



Apex Frame

Heavy-duty steel frame built for Direct Drive wheels. The Apex Tube structure ensures unmatched stability and strength during every race.



Length: 60 inches

Total heights: 51 inches

Width: 28 inches

Durable solid frame for serious users

GTA™ APEX

Stake F1® Team KICK Sauber Edition

Stake
F1™ TEAM

KICK
SAUBER



Sleek and one of a kind design

Introducing the STAKE F1® TEAM KICK SAUBER GTA™ Apex Formula Racing Simulator, crafted by GTR Simulator with input from pro drivers, switches effortlessly between Formula and GT seating. Its sturdy frame ensures stability, while customizable adjustments for seat, pedals, and wheel optimize your setup. Compatible with PC and consoles, it offers immersive realism with premium materials, force feedback, and optional motion. Easy to assemble, it's perfect for pros and novices seeking top-tier performance and durability.

The Seat

Switch between GT and Formula seating with a tilt-adjustable design and a multi-functional headrest that doubles as a backrest or lumbar support. Comfort and versatility in one seat.

Seat Base Bracket

Fully adjustable for seat height, angle, and distance with a precision slider—customize your driving position for max control and comfort.

Pedal Plate

Quickly switch between GT and Formula angles with an adjustable, pre-drilled pedal plate. Built for fast tweaks and total precision.

Wheel Mount

Easily fine-tune wheel height, distance, and angle for a perfect fit. Designed for quick adjustments and confident control.



Apex Frame

Heavy-duty steel frame built for Direct Drive wheels. The Apex Tube structure ensures unmatched stability and strength during every race.

Length: 60 inches

Total heights: 51 inches

Width: 28 inches



Durable solid frame for serious users

FS-18C

Official Air Force licensed Flight Sim



From the Ground to the Sky

The Air Force Licensed Flight Simulator by GTR Simulator offers an authentic aviation experience with U.S. Air Force approval. Its robust steel frame ensures stability, while the adjustable flight control mount supports yokes, HOTAS, rudder pedals, and more—customizable for height, distance, and angle. Compatible with PC and console flight titles, it features premium materials and optional motion for immersion. Quick to assemble and built to last, it's ideal for pilots and enthusiasts mastering the skies.

Why Choose the GTR Air Force Licensed Flight Simulator?

- Heavy-duty steel frame for unmatched stability
- Fully adjustable mounts for yokes, HOTAS, pedals, and more
- Precision control over height, angle, and distance
- PC & console compatible across major flight sim titles
- Premium materials & motion-ready for true realism
- Quick setup for more flying, less waiting
- Flexible design fits casual flyers and pros alike
- Built tough for combat-grade durability

The Flight Control Mount

Fully adjustable mount supports yokes, HOTAS, rudder pedals, throttle quadrants, trim wheels, FMD, and autopilot systems. Fine-tune height, angle, and distance for precise control of pitch, roll, yaw, throttle, flaps, and more. Quick-adjust, pre-drilled design fits any setup—fighter jet or airliner. Built for realism, comfort, and total immersion.



Length: 60 inches

Total heights: 51 inches

Width: 28 inches

Officially licensed product of the Dept. of the Air Force. Endorsement by the Dept. of the Air Force is neither intended nor implied.



Durable solid frame for serious users

FS-16C

Compact Foldable Flight Simulator



From the Ground to the Sky

This patent portable folding flight cockpit chair is engineered for universal compatibility with controls for airplanes, commercial airliners, helicopters, and fighter jets. Featuring a backrest and seating frame pivotally connected, the collapsible sling chair ensures maximum comfort for extended simulation sessions. It seamlessly integrates with various flight systems, including yokes, throttle quadrants, joysticks, HOTAS throttles, and pedals, offering versatility for all flight control needs.

Length: 55 inches

Steering Wheel: 23 inches

Total heights: 35 inches

Width: 21 inches

Pedal Plate Angle: Adjustable

Gross Weight: 25 kg

Frame Material: Alloy Steel

Seat Material: Upholstery Foam

Three Customizable Versions

Universal Compatibility: Supports controls for regular planes, commercial airliners, helicopters, and fighter jets.

Adaptable Configurations: Seamlessly integrates with various systems, including yokes, throttle quadrants, joysticks, HOTAS throttles, and pedals.



Folds in seconds, flies anywhere

GTA™ COMPACT V2



Space-Saving Performance Unleashed

Introducing the GTR Simulator GTM Compact 2DOF Base for GTA, GTA Pro, and New Advanced Aviation Training Device Flight Simulator. Compact, high-performance motion platform engineered for precision and durability. Experience market-leading design and quality that brings realistic g-force simulation to your racing or flight setup. Designed to integrate seamlessly with existing GTR Simulator topline cockpits, ensuring optimal performance and safety during extended use.

Specifications

Gross weight: 80 lbs.

Total length: 33 inches

Total height: 20.5 inches

Total width: 13 inches

DC Motors rated at 12V 20A 250W

50RPM

Max capacity: 300 lbs.

Range of Motion: Max. angular

displacement of pitch & roll : +-25°

Max Acceleration: 1080°/s²

Advanced Motion Technology

- Experience realistic movements with 2 Degrees of Freedom (Pitch and Roll), effectively replicating dynamic forces in racing and flight scenarios.

Compact Integration

- Designed to fit seamlessly into GTR Simulator Steel cockpits
- without requiring additional space, making it ideal for both home and commercial setups.

Realistic Tactile Feedback

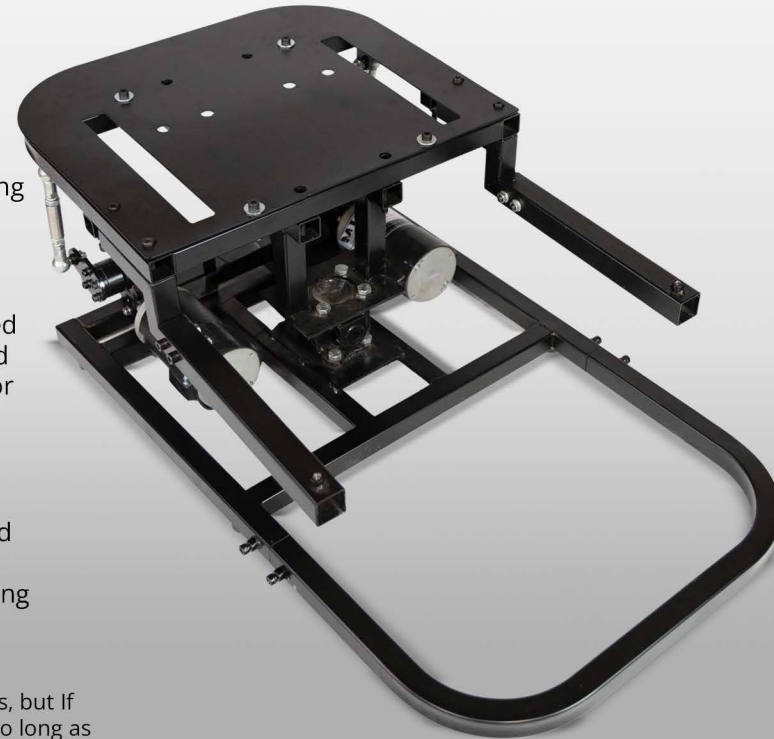
- Provides precise vibration feedback based on telemetry data, simulating various road conditions, gear changes, and collisions for an immersive experience.

Premium Manufacturing and Durability

- Built with top-quality components trusted by professional race teams and training institutions worldwide, ensuring long-lasting performance.

VR Compatibility

The GTM comes with monitor mounting brackets, but If you'd like to utilize a VR headset, then go for it! So long as your PC supports VR, your motion gaming experience should be fine considering that the motion unit does not pull any data from the headset and as far as it is concerned the headset is just a display.



AATD

(Advanced Aviation Training Device Flight Simulator)



The Aerodynamic Masterpiece

Experience the thrill of flight with the GTR Simulator AATD Advanced Aviation Training Device Flight Simulator Frame and Seat. Designed to emulate aircraft like Cirrus, Vision Jet, Cessna, and Diamond, this simulator frame is built from durable powder-coated steel and equipped with versatile mounts for yokes, rudders, and sim racing peripherals. Ideal for both novice pilots and seasoned aviators, it offers unparalleled adjustability and compatibility across PC and console platforms.

Robust Construction

Made from heavy-duty steel tubing with a sleek powder coat finish, ensuring durability and stability under intense usage.

Versatile Mounting Solutions

Features a micro-adjustment control mount and is pre-drilled for compatibility with all popular yokes, rudders, flight controls, and sim racing peripherals.

Enhanced Practical Features

Equipped with an adjustable gear shift mount and cross-platform compatibility, designed and engineered in the USA for quality and performance.

Customizable Setup

Includes adjustable yoke and steering wheel mounts, dual-side flight control mounts, and a reinforced rudder/pedal mount for diverse training scenarios.

Specifications

Length: 50 inches

Steering height: 24 inches

Total height: 50 inches

Width: 32 inches

Gross Weight: 60 lbs.

Frame Material: Alloy Steel

Seat Material: Leatherette

Monitor Mount: VESA standard

compliant (MAX 65 inches for single monitor or 3 x 24 inches for standard triple monitor or 3 x 39 for large triple monitor stand)



GTA™ REVOLUTION RACING SIMULATOR



Unrivaed Stability Meets Customization

Introducing the GTA Revolution racing simulator, the ultimate sim racing cockpit that delivers unparalleled rigidity and stability for the most immersive racing experience. Designed and engineered in the USA, this sim racing cockpit is the most rigid on the market thanks to its thicker-walled aluminum extrusion and heavy-duty brackets. Compatible with major brand steering wheel mounts, the GTA Revolution includes seat slider rails, universal gear shift mount, and over 10 add-on accessories to choose from, including flight simulator expandable options. With three pedal mounting options available, including a pre-drilled pedal plate or extruded aluminum profile, you can customize the setup to your preference.

Optional Equipment

Side wheel mount

- Front wheel mount
- Height adjustable pedal floor mount
- Height adjustable inverse mount
- Integrated monitor stand
- Stand alone monitor stand (single to quad monitor setup)
- Oversize shifter & handbrake mount

Specifications

Length: 57 inches

Steering Height: 25 inches

Total Height: 40-45 inches

Width: 26 inches

Gross Weight: 60 KG

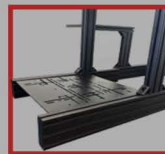
Frame Material: Aluminum

Seat Material: Synthetic leather

Monitor Mount: VESA Standard
Compliant
(MAX 4x39" or 1x65")

Standard Equipment:

- Bottom wheel mount
- Non-height adjustable pedal mount
- Oversize shifter & handbrake mount



GTA™ PRO MODEL



Ultimate In Adjustability

With a vibrant presence in the racing community, GTR Simulator acknowledges and caters to racers of all ages and levels. Presenting the GTR Pro Simulator - a professional-grade gaming cockpit, meticulously designed and thoroughly tested by accomplished racers, custom-made for enthusiasts starting from the tender age of three. From petite pilots to towering track titans, the GTA Pro Simulator effortlessly accommodates drivers ranging from 32 inches to a towering 7 feet in height! It's not just a simulator, it's an evolving gaming centerpiece, ready to grow alongside your budding racer while offering boundaries entertainment for the entire family.

Standard Equipment:

- Adjustable GTA-Pro frame base
- Adjustable steering wheel mount
- Adjustable pedal mount
- Shifter mount

Optional Equipment:

- Side wheel mount
- Front wheel mount
- Height adjustable pedal floor mount
- Height adjustable inverse mount
- Integrated monitor stand
- Stand alone monitor stand (single to quad monitor setup)
- Oversize shifter & handbrake mount
- Keyboard mouse tray

Specifications:

Length: 43-58 in

Steering Height: 22-24 in

Monitor Height: 46-53 in

Total Height: 43 in

Width: 23 in

Gross Weight: 38 KG

Frame Material: Alloy Steel

Seat Material: Synthetic leather

Monitor Mount: VESA Standard Compliant
(MAX 4x39" or 1x65")



GTA™ MODEL



An Unrivaed Level of Precision

Experience the thrill of authentic racing with a seat so genuine it could be mounted in an actual car. The GTA model, featuring a robust, powder-coated heavy-duty frame, is available in three striking colors - Majestic Black, Diamond Silver, or Alpine White, each designed to complement your racing style. Embodying the spirit of adjustability, the GTA model offers an unrivaed comfort with its 14-way adjustable seating positions. This revolutionary design ensures an unparalleled driving experience, leaving you rejuvenated post-gaming. Transcend the journey with our fully adjustable racing bucket seats, engineered for comfort that refreshes and enhances your gaming performance. Your ultimate driving adventure begins here, with the GTA model.



Optional Equipment:

- Side wheel mount
- Front wheel mount
- Height adjustable pedal floor mount
- Height adjustable inverse mount
- Integrated monitor stand
- Stand alone monitor stand (single to quad monitor setup)
- Oversize shifter & handbrake mount
- Keyboard mouse tray



Standard Equipment:

- Adjustable GTA frame base
- Adjustable steering wheel mount
- Adjustable pedal mount
- Shifter mount

Specifications:

Length: 50-56 in

Steering Height: 24-27 in

Total Height: 40-44 in

Width: 23 in

Gross Weight: 26 KG

Frame Material: Alloy Steel

Seat Material: Synthetic leather



GTS-F MODEL



Always In The Moment

The GTR Simulator GTA-F model is designed for passionate players seeking unprecedented thrill and excitement. This simulator promises to propel your gaming experience to new heights like never before, featuring a sturdy, powdercoated metal frame in three stunning color choices - Majestic Black, Diamond Silver, or Alpine White. We're gamers too, and we understand your quest for the ultimate gaming experience. Therefore, our design is engineered to make you feel extraordinary behind the wheel, turning even the novice players into heroes of the track. Your new GTA-F model simulator is equipped with a versatile bracket, accommodating either one or three monitors. Prepare to elevate your gaming adventure to unparalleled dimensions every single time.



Optional Equipment:

- Side wheel mount
- Front wheel mount
- Height adjustable pedal floor mount
- Height adjustable inverse mount
- Stand alone monitor stand (single to quad monitor setup)
- Oversize shifter & handbrake mount
- Keyboard mouse tray
- Middle control holder

Standard Equipment:

- Adjustable GTA-F frame base
- Adjustable steering wheel mount
- Adjustable pedal mount
- Integrated triple monitor stand
- Shifter mount

Specifications:

Length: 43-58 in

Steering Height: 22-24 in

Total Height: 43 in

Width: 23 in

Gross Weight: 38 KG

Frame Material: Alloy Steel

Seat Material: Synthetic leather

Monitor Mount: VESA Standard Compliant
(MAX 4x39" or 1x65")



RS30 ULTRA WHEEL



Simulator-grade Racing Performance

Introducing the RS30 Ultra Wheel, born from collaboration with elite racers. This highly realistic racing accessory, mountable onto a cockpit or desk, amplifies your gaming experience. Its helical gears ensure strength, precision, and quiet operation, with force feedback enhancing the simulation's realism. Offering rotation switchable between 270 and 900 degrees, it adjusts to your racing style. The durable aluminum-faced pedals employ non-contact technology for reliable gear shifts, while the sturdy construction and precise internal components guarantee stability and efficiency on the virtual track.

Supported FFB Effects:

- Constant force
- Spring
- Friction
- Inertia
- Damping

Motor Performance:

- Efficiency: 57.60%
- Speed: 1583 RPM
- Current: 0.21
- Output 2.91W

Material:

Wheel housing: Steel and Plastic

Wheels: Leatherette or suede (Composite)

Mounting clamps: Steel and

Supported platform:

Upgradeable compatibility to PC (Windows 7 and up)

Dimensions:

28 x25.5x24 cm
(11 X 10 X 9.5 in)

Power requirements:

110v (60Hz) / 220v (50Hz) 500w
electronic hardware

Weight:

2.95 KG / 6.5 lbs.

Warranty:

1 Year limited electronic



V3-PRO PEDALS



Ideal Fit for GTR Simulator

Step into the exhilarating world of racing with the V3-Pro Pedals, engineered to emulate the adjustable features typically found in race-prepared coiloversuspensions. Tailoring to your personal preferences, these pedals allow for customizable spring force travel. Boasting nine different lateral positions, the pedals' spacing can be tailored to suit your unique racing style. Additionally, their height-adjustability provides the option for both upright or reclined configurations, mimicking the cockpit of professional racers. Beyond this, the pedal frame introduces the sensation of footwell boundaries, creating a more immersive and realistic racing experience. With the V3-Pro Pedals, ergonomic customization goes the extra mile.

Connection requirement:

RJ45

Weight:

9.75 KG / 21.5

Material:

Pedals base: Laser cut steel

Pedal pads: Reinforced plastic

Foot stand: Anti-slip diamond cut

Throttle: 2 to 10 KG (4.4 to 22 lbs.)

Brake: 6 to 45KG (13.2 to 99.2 lbs.)Plastic

Adjustments:

- Initial angle
- End angle
- Pedal spring force
- Pad positions
- Pedal position(left-right, forwardbackward)
- Foot stand position (up-down)

Dimensions:

22.86 x 34.29 x 22.86 cm

(9 X 13.5 X 9 in)

Supported platform:

PC. Please contact us for more console support details

Warranty:

1 Year limited electronic

Standard 2-Pedal



Optional 3-Pedal



RH3 USB HANDBRAKE



Enhance The Realistic Drift Experience

Experience the thrill of racing at your fingertips with the RH3 USB Handbrake. Compatible with a diverse range of gaming wheels on PC. The RH3 becomes a game-changing, standalone addition to your gaming rig, enhancing control in racing games like iRacing, Forza, Project Cars, Assetto Corse, and more. Constructed with lightweight machined aluminum and mild steel, the handbrake ensures quality alongside a customized racing experience. With adjustable handle height, angle, and spring tension, it's crafted to align perfectly with your personal racing style. Equipped with automatic calibration technology, the handbrake sensor guarantees precision without deterioration over time. Emulate 15 the authentic racing experience with the non-contact sensor and immerse yourself in the ultimate driving adventure.

Adjustments:

- Handle height
- Handle angle
- Spring tension (Conventional Springs /Extra Reinforced Springs)

Material:

Light weight aluminum & mild steel

Weight:

1.36 kg/ 3 lbs.

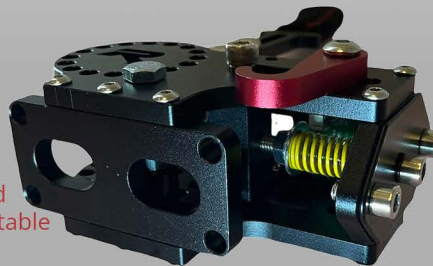
Supported platform:

PC Windows

Warranty:

1 Year limited electronic hardware

Additional reinforced
spring tension adjustable



Handle height &
direction adjustable

RSH3 7+1 GATED SHIFTER



Unleashing Authentic Racing Dynamics

Experience the thrill of the racetrack with the RSH3 7+1 Gated Shifter, engineered for unparalleled precision and longevity. Designed with an automatic calibration system, it ensures persistent accuracy without any need for routine set-up or testing. The RSH3 7+1 Gated Shifter boasts high-quality construction, featuring laser-cut steel and a handle adorned with plush suede covers for superior comfort and durability. It pairs seamlessly with an array of PC Windows gaming wheels, including all major wheel & pedals in the market, offering extensive compatibility across models. Relish the flexibility it offers, as it's compatible with most major racing games, including both linear and non-linear types. Simply plug it in and prepare to immerse yourself in the ultimate racing experience.

Warranty:

1 Year limited electronic hardware

Features:

- Full metal construction
- 7 gear H-Pattern mode
- Realistic shifting mode with strong feedback
- 15-bit High Precision Angle Sensor
- Replaceable Shift Knobs
- Shifter knob made of solid polished aluminum
- Exchangeable gear knob, compatible to popular automotive standards
- Adjustable shift feeling and resistance
- Multiple mounting options on all 4 sides and bottom

Material:

CNC machined aluminum & mild steel

Adjustments:

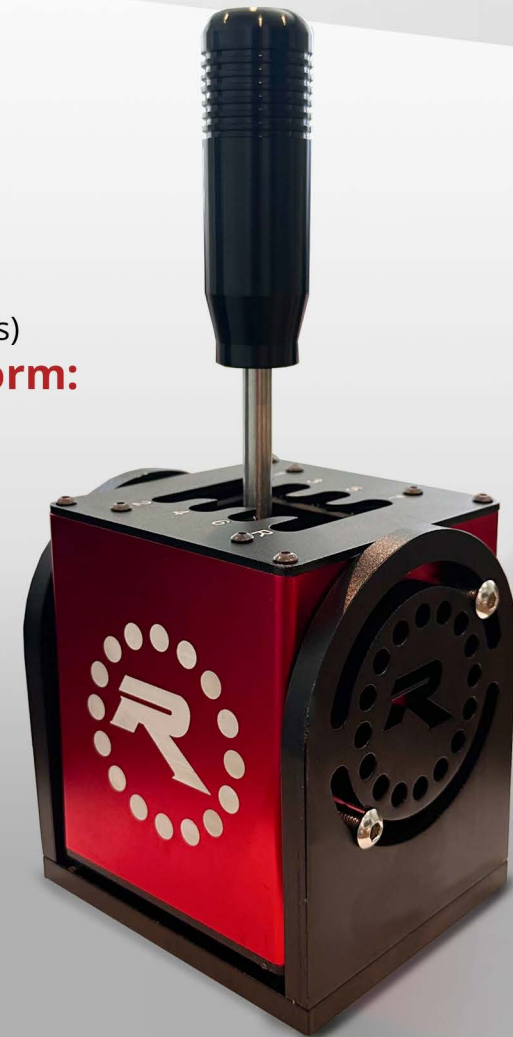
- Handle height
- Handle angle
- Spring tension (Conventional Springs / Extra Reinforced Springs)

Supported platform:

PC Windows

Weight:

1.15 KG / 2.5



GTA PRO GAMING TABLE



Elevate Your Gaming Experience

Unveiling the GTR Gaming Table: an unparalleled fusion of comfort, adjustability, and aesthetics for an elevated gaming experience. It offers integrated stands for 1-4 monitors, ergonomic design for lengthy gaming sessions, and personalized adjustability. Not forgetting a sophisticated cable management system and ample storage for your gear. Ensuring stability and a tidy space, it's your one-stop solution for all gaming needs.

Specifications

- Length: 46 in
- Height: 35 in
- Total Height: 60 in
- Width: 22 in
- Gross Weight: 40 KG
- Frame Material: Alloy Steel
- Table Material: Powder-coated steel

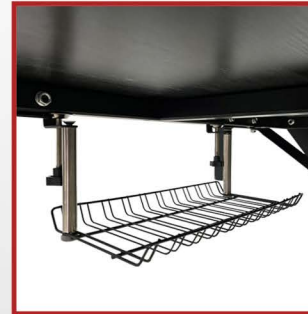


Standard Equipment:

- LED light & USB connector
- Cable management
- Additional storage
- Cup holder & Headphone holder

Optional Equipment:

- Integrated display stands (Single to quad monitor)



APEX GAMING CHAIR



Where Sim Racing Meets Everyday Comfort

Designed with the same performance DNA found in the GTA Apex racing simulator, the APEX Gaming Chair redefines ergonomic seating for gamers, streamers, and professionals. Whether you're racing through virtual circuits, grinding in ranked matches, or working from home, the APEX Gaming Chair delivers all-day comfort and commanding style.

- **Race-Inspired Comfort:** Built using the same ergonomic seat found in the GTA Apex racing cockpit crafted for long gaming or work sessions.
- **Swivel Base with Casters:** Equipped with a sturdy chair base, smooth-rolling 5 casters, and a durable gas lift cylinder for easy height adjustment and mobility.
- **Adjustable Headrest Design:** Unique headrest transforms into a backrest or lumbar cushion to support various sitting postures.
- **Adjustable Armrests:** Height-adjustable and swivel-capable hand rests provide customizable support to reduce arm fatigue during long hours of use.
- **Bold Licensed Color Options:** Choose from GTR Signature Red, KICK Sauber Green, or Air Force Blue each with authentic branding and striking aesthetics.
- **Sturdy Bottom Plate:** Reinforced swivel base with steel bottom plate provides reliable support

Specifications:

- Seat Width: 26 in
- Seat Height: 53 in
- Weight: 40 lb

- **GTR Red:** Classic and bold with GTR Simulator's iconic branding
- **KICK Sauber Green:** Officially licensed by the Stake F1® Team KICK Sauber, celebrating Formula 1 passion
- **Air Force Blue:** Inspired by fighter pilot precision, with licensed Air Force branding for a powerful presence



PISTA RACING SEAT



Level up the stylish and comfortable

Welcome to the new era of racing with the GTR Simulator Pista Racing Seat. Crafted from superior synthetic leather, this seat exudes a unique and high-tech flair with faux carbon fiber fabric on both sides of the seat back and bottom.

The robust seat frame, encased in soft, injection-molded foam padding with deep thigh bolsters, ensures you remain firmly seated in the lap of comfort. Each Pista Racing Seat is fully compatible with all GTR Simulator racing cockpit models, offering seamless integration.

Designed with three principal ergonomic support positions - neck, back, and lumbar, the Pista Racing Seat effectively provides unparalleled comfort, enhancing your racing experience like never before.



GTA GAMING CHAIR



Elevate Your Gaming Experience

Introducing the GTR Gaming Chair, a revolutionary addition to your gaming arsenal. This highly versatile chair is an innovative blend of technology and comfort, designed to take your gaming experience to unparalleled heights. Outfitted with a comprehensive gaming chair kit, the GTR Gaming Chair provides an unrivaled level of customization. It's ready to seamlessly integrate with our specialized Pista and Speciale racing seats. These optional upgrades allow you to personalize the chair's upper seat part according to your unique preferences, elevating both comfort and style. Experience gaming like never before in the GTR Gaming Chair. With its sturdy build, adaptable design, and exceptional ergonomic support, it's more than just a chair - it's a game-changer. This next-level gaming chair is destined to be a coveted centerpiece in any gaming setup. Step into the future of gaming with the GTR Gaming Chair

Specifications:

- Seat Depth: 46 in
- Seat Height: 35 in
- Seat Width:
- Total Height: 60 in
- Gross Weight: 21 KG
- Frame Material: Synthetic leather



The armrest is 4-way and swivel adjustable



SPECIALE RACING SEAT



The Stylish and Comfortable seat you deserve

Embrace a seamless integration with the GTR Simulator Racing Seat, meticulously designed for compatibility with all GTR models, existing and future racing cockpits, and motion platforms. Crafted from premium synthetic leather, this seat promises not just quality, but also, perfect for your prolonged racing adventures. Waterproof and easy-to-clean, it ensures practicality is at the forefront. The seat's backrest, equipped with a single adjustor and fitting a double slider, offers racers the flexibility to fine-tune a wide range of angle rotations, making it an ideal choice even for brief respites. Designed for racers who crave to elevate the aesthetics, comfort, and stability of their seats without compromising on functionality, these racing seats are truly a cut above the rest. Built around a robust yet lightweight frame and furnished with high-density shaping foam, the GTR Simulator Racing Seat offers the ultimate blend of comfort, performance, and durability, so you can remain engrossed in your race, locked in, and thoroughly



ACCESORIES



Customize Your Own Rig

At GTR Simulator, we're dedicated to providing everything necessary for an authentic sim racing experience, but we refuse to deliver a one-size-fits-all solution. We recognize that every driver is unique, coming with distinct shapes, sizes, and personal gaming styles. With this understanding, we offer a variety of accessories to customize your sim racing cockpit, eliminating the need for any personal modifications. Our goal is to enhance your comfort and adapt to your gaming style. Our platforms are modular and designed for easy upgrades. With just a few simple adjustments, you can upgrade from no monitor mount to a single monitor mount, or from a small triple monitor display to a larger triple or quad monitor setup. We acknowledge that maintaining a budget is crucial in this hobby. Therefore, we offer our components as modular upgrades, allowing you to expand at your own pace, without any pressure. At GTR Simulator, we're all about meeting your unique needs and maximizing your sim racing experience.

List of accesories

- Wheel mount
(side, bottom, front)
- Pedal mount
(standard, height-adjust, inverse height-adjust)
- Keyboard mouse tray
- Middle control holder
- Shifter | handbrake holder
- Monitor stand (single , triple, quad)
- Adjustable monitor mount adaptor
- VESA adaptor
- Floor mat
- Tabletop
- Armrest



SOCIAL MEDIA

**Follow GTR Simulator
on Social Media**



@gtrsim



discord.gg/FuvzxGhMnz



@gtrsimulator



@gtrsimulator_offical



@gtrsimulatorgaming



GT **R**
SIMULATOR

Design , Tested & Used by Professional Racers



gtrsimulator.com
Tel: (888)-GTR-SIM
Fax: (877)-GTR-SIM
Info@gtrsim.com

